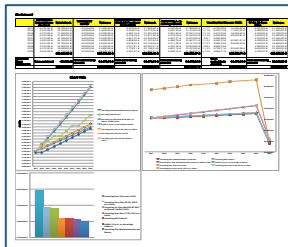




GET LOCAL – WITH A LOCAL



WHAT

- **Research:** Evaluating the target markets, sectors, and products
- **Scouting:** Access to public and off-market offers
- **Development:** Advising the establishment of an optimal management/ corporate solution to purchase and own real estate in Germany. We focus on matching the legal and fiscal framework with the client's business plan.
- **Asset Management:** Supervising and managing the real estate assets according to the client's business plan (accounting, auditing, financing/ leveraging, e. g.)
- **Property Management (on request):** Supervising and managing the clients' assets (rent, construction (refurbishing and new development), e. g.)
- **Facility Management (on request):** Managing the properties to ensure their functionality regarding technical, financial and legal aspects

HOW



- Supervised outsourcing model, managing our affiliated partners that we have worked with for years
- Client's-scope-1st model, proposing a made-to-measure business plan, which becomes the basis of the contract with our clients
- Efficient and effective management of tasks with protection of our clients' interests as priority
- Focusing on sustainability in any perspective, starting by the relationship with our clients and going beyond technical matters



WHO

- Bernhard S. Elias – born in Beirut, raised in Düsseldorf, based in Berlin since 1998
- 20 years of active real estate marketing, refurbishment, and development
- Leading the PR department of the Federal Agency for Construction
- Head of Communication of Germany's second biggest private housing corporation, (more than 160,000 apartments all over Germany)
- Founding Elias Consulting in 2010 as a privately owned and independently managed real estate consultancy to facilitate international investors' access to Germany
- Possibility to reach extends also to other parts of Germany

SAMPLES OF REFERENCES I



Viktoria Quartier, Berlin (historic brewery)
(520 apartments)

Purchase, Development/
Conversion, Construction, PR,
Marketing
(1998 – 2004)
Project volume: € 350M



German Federal Ministry for Family Affairs, Berlin
(approx. 8,300 sqm office space)

PR during development and
construction
(2006 – 2010)
Project volume: € 56M



Dom Aquaree, Berlin
(approx. 68,000 sqm effective space)

Development, PR
(2001 – 2005)
Project volume: € 250M

SAMPLES OF REFERENCES II



UNESCO World Heritage Estates, Berlin

(5 housing estates/approx. 1,000 apartments)

Development, Refurbishment, Marketing, Lobbying, PR
(2007 – 2011)
Project volume: € 9,5M



3 Real Estate Fund owned properties, Berlin area
(housing, retail, office – approx. 950 units)

Refurbishment, Marketing, PR
(2002 – 2007)
Project volume: € 7M



Housing Estate Corporation, Berlin/ Potsdam area
(72 units)

Establishment and Management of corporation, Refurbishment, Construction (2013 – 2017)
Project volume: € 15M

CONTACT

ELIAS CONSULTING
Postbox 33 21 05
D – 14180 Berlin

www.elias-consulting.de
info@elias-consulting.de

+49 1522 78 66 241

CONCEPT & DESIGN

© Nounou Design 2017

Legal Notice:

Any reproduction or commercial use of this document requires prior written permission.